

**COMPANY
PROFILE**



Project: 230kV Substation (SENOKO)

CONTENT

01	OUR HISTORY
03	WHY BUSWAYS
05	OUR SERVICES
07	SUCCESSFUL PROJECTS
19	OUR MAJOR CLIENTS
21	OUR CERTIFICATIONS
21	OUR OFFICE & SUPPORT
23	OUR PERFORMANCE VALUE (2018 - 2022)

OUR HISTORY

In 2006, Busways started as a contractor with a small team of five engineers, to supply and install Electrical LV & MV Busducts. We made the best out of every opportunity given to us with full dedication over the years. Through the increased share of projects and solutions, we acquired deeper technical and practical expertise.

Today, we are one of the leading M&E companies that primarily deals with electrical power distribution. To build on this success, Busways continues to upscale ourselves by getting higher level grading certified by BCA so as to better position ourselves in the market and we will continue to strive to make a difference in every project that we undertake. This will be our commitment in our brand essence to strive to deliver our highest standard under strict quality management guidelines as our promise.

2008

Member of The Singapore Contractor Association

2014

The Proud Recipient 2014. Asian Prestige Innovation & Quality Service Awards

2016

Busways Engineering Services Pte Ltd was changed to Busways Pte Ltd

Achieved ISO 9001, ISO 14001, OHSAS 18001 & SS506: Part 1 for the scope of activities: Provision of HV/LV Electrical Engineering Services for:

- Supply, Install, Testing & Commissioning & Maintenance of Busducts System, Cabling & Cable Support System and Metal Fabrication Works

Attained BizSafe Star by The Workplace Safety and Health Council

2017

Attained Grade L4 for BCA Registered Contractor – ME05 Electrical Engineering

2018

Attained Grade L5 for BCA Registered Contractor – ME05 Electrical Engineering

Upgraded OHSAS 18001 & SS506: Part 1 to ISO 45001: 2018

Member of Singapore Electrical Contractors & Licensed Electrical Workers Association

2019

Member of Singapore Electrical Trades Association

Awarded Singapore Enterprise Medal Of Honour (The Top 100 SMEs Category)

2022

Attained Grade L6 for BCA Registered Contractor – ME05 Electrical Engineering

ME06 – Fire Prevention & Protection System Grade L1

GB2 – General Builder Class 2

WHY BUSWAYS

Busways is committed to uphold excellent work quality control for all our customers.

We do so by:

- Communicating, understanding and exceeding customers' expectations
- Providing only the best materials, service and skilled manpower
- Meeting deadlines and ensuring a smooth completion of projects
- Monitoring performance and improving key processes through an internal audit

To monitor our progress, we have the following processes in place for evaluation:



Material delivery identification & verification

Materials are documented and assessed by our experienced site managers to enforce compliance with projects' requirements.



Work-in-progress installation: in-house inspection & verification test

Work-in-progress installation inspection & testing are done to prevent any snowballing of errors towards the final completion of the project. Any error found will be rectified immediately to avoid any need of overhauling.



Work-in-progress inspection: RTO & RE inspection

Work-in-progress inspections are done with the RTO and the RE in compliance with project requirement.



Testing and commissioning: Site Acceptance Test, individual & combined system functional test

Testing and commissioning are of paramount importance, during and after installation to ensure safety & contract compliance. This is to ensure that the system is fully functional and without compromise.



VISION

To be the most trusted partner that is adept and qualified for all M&E solutions for generations to come.

BRAND MISSION

We constantly improve our level of proficiency to give our clients the level of quality and professionalism that they have become used to.

VALUES

Safety

We do not take safety for granted. We ensure that all standard operating procedures are carried out properly without compromising the safety of our employees.

Punctuality

We always deliver timely results. The notion of punctuality is what separates us from the rest.

Adherence

We comply to all rules and regulations and do not compromise our ethics to achieve fast results.

Meticulous

We scrutinise all aspects of the project thoroughly right from the design to the implementation stage to keep errors to the minimum.

Knowledge

We think beyond convention to increase value in our works. To make a difference, we share our knowledge to grow and learn more.

OUR SERVICES

Supply and installation of electrical LV and MV busducts, primary power distribution network equipment and cabling infrastructures

We are responsible for the procurement of all LV/MV busducts, equipment and cabling infrastructure as prescribed by your project requirements. Installation is done by our qualified personnel and testing is done by our professional engineers.



Design, customise, fabricate & installation of cable containment system

Apart from busducts and their canopies, we also have the capabilities to design, customise, fabricate and install your cable containment needs. Through our designs and customisation, we aim to match the original facade or enhance the aesthetics surrounding the infrastructure. We place great and equal emphasis on both practicality and presentation in all our designs.



“At Busways, we offer in-depth proficiency and intricate solutions to meet your requirements within stipulated timelines.”

Design, customise, fabricate and installation of metal works such as aluminium canopy for busduct housing & metal structure of data hall hot aisle cold aisle containment.

Every busduct requires a watertight and durable housing. It is imperative for Busways to provide customised canopies which are able to fit busducts of any dimensions. We provide solutions in the form of design, fabrication and installation specifically catered to your busduct needs.



5

major projects
per year

\$35m

average
annual turnover
(2018-2022)

SUCCESSFUL PROJECTS

With at least 5 major and multiple other smaller projects every year, Busways has managed to amass a number of projects under her portfolio since her establishment. Accompanied with a spectrum of industry knowledge and experience from various sectors, Busways certainly has the expertise to handle projects of any scale.

To add, Busways has achieved approximately \$175 million in revenue for the past 5 years. And with such a consistent track record, you can depend on us to deliver.

Industries that we focus:

- Industrial
- Commercial
- Semi-conductor
- Data Centres



Data Centre

- Yahoo Data Centre at Penjuru
- Equinix Data Centre at Ayer Rajah / Pioneer / Tai Seng
- DRT Data Centre at International Business Park
- Global Switch Data Centre at Tai Seng / Woodlands
- Singtel Data Centre at Kim Chuan / Jurong
- Keppel Data Centre at Tampines
- 1-Net Data Centre at Woodlands
- WEN 1, 2 and 3 Data Centre at Bulim / Pioneer at Jurong
- Zenith Data Centre at Loyang
- Telin and Kingsland Data Centre at Sunview
- Facebook Data Centre at Sunview
- Amazon SIN060 Data Centre at Sunview
- Thorium T20 Data Centre at Tampines
- DODID Data Centre at Tagore
- Microsoft Data Centre at Woodlands

Data Centre

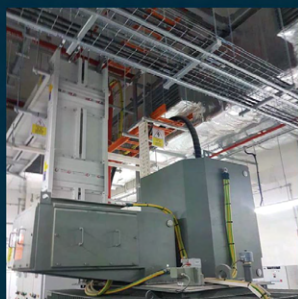
Here's the list of services done for this project.



BMS / EBMS Installation



Electrical Power Distribution Network & Cabling Works - Work Done in Electrical Riser



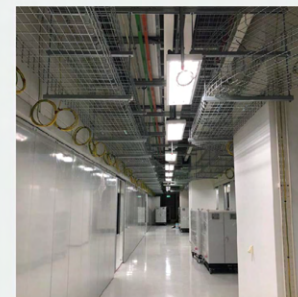
Electrical Power Distribution Network & Cabling Works - Indoor busducts & termination work to transformer, cable containment & cabling works



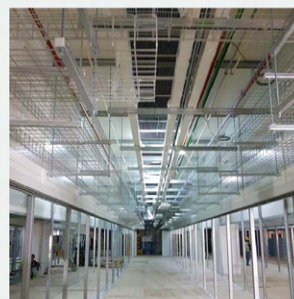
Electrical Power Distribution Network & Cabling Works - Cast resin busducts & termination work inside generator enclosure



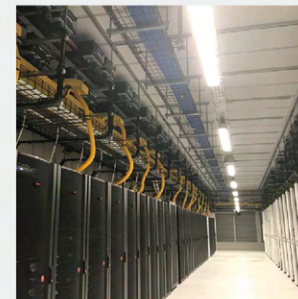
Customised metal fabrication works - hot aisle installation using hollow sections & unsaturate



Customised metal fabrication works - cold aisle installation using hollow sections & unsaturate



Customised metal fabrication works - customised cable support system in hot aisle for future M&E services installation



Distribution Busducts Installation in Data Hall



230kV Substation (SENOKO)

2019 is a new chapter for Busways Pte Ltd. For the 1st time in our history, we were awarded an important & prestigious contract to assemble 230KV 150MVA Transformers on site at Micron 230KV Substation. In addition to the contract, we were also the specialist contractor to fit-out the whole substation with various cable containment infrastructures, installation & termination of 230kV HV cable & LV control cables to respective 230kV & 22kV HV switchgears & transformers.

230kV 150MVA
Transformer Installation



230kV GIS Equipment Testing



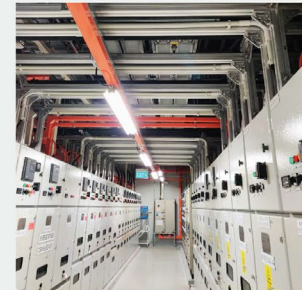
Cable Support Installation



230kV Cable Installation



6.6kV Busducts Installation

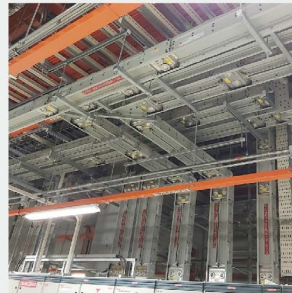


Semi-conductor Manufacturing Project

Over the period of our establishment, we were involved in several projects related to semi-conductor manufacturing plants. One of them is the Micron at Senoko. We were awarded a major contract for the supply & installation of MV/ LV busducts to serve various equipment control panels & load centre. In addition, we were also involved in the LV power provision & hook-up of wafer-chip fabrication machines. Moreover, another part of the contract was the supply & install of ELV cabling works to hook-up event monitoring system.



Supply & Install LV Provision of CEE FORM for hook-up of wafer-chip Fabrication



Supply & Install of MV/LV Busducts for control panels & Load Centre

New Mandai Bird Park

Another milestone for our company is the award of electrical infrastructure for underground pipes & manholes in the new Mandai Bird Park. These underground pipes & manholes infrastructures are the "veins" to allow electrical cables & power to serve various attractions in the park.

Underground Manhole: Cast-in Situ Work in Progress



Underground Electrical & telecom Lead-in Pipe works: Concrete haunching of pipes in progress

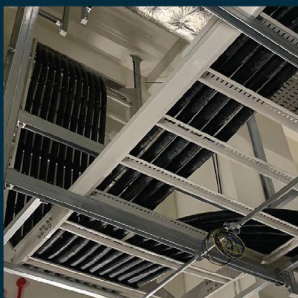


Siltronics FAB Project

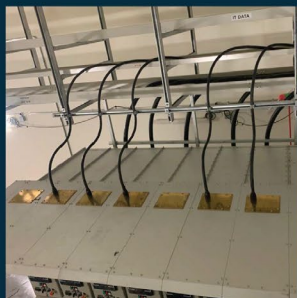
Here's the list of services done for this project.

This High Voltage Cabling Works project is a testament to our team's technical and management expertise, and our unwavering commitment to delivering exceptional results to our clients. We were able to successfully install the High Voltage 12.7/22kV cable on the cable ladder system and complete termination work for 22kV at switchgear, while maintaining the highest level of quality and safety.

This project, along with our extensive portfolio of successful projects, demonstrates our ability to deliver innovative and reliable solutions, and our commitment to exceeding our client's expectations.



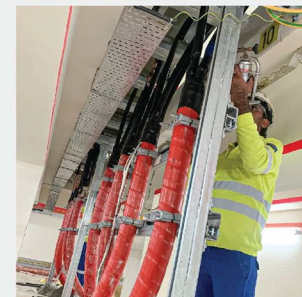
Successful installation of the HV 12.7/22kV cable on the cable ladder system.



The installation of the pilot cable on the switchgear.



Completion of termination work for 22kV at the switchgear was a critical milestone in the project.



HV cable at the substation cable chamber room, ensuring the proper functioning of the high voltage cabling system.



Our team successfully installed cable ladders as supports for high-volume or heavy cabling.



Completed installation cabling work to the switchgear panel.

Data Centre Solutions

Busways specializes in delivering high-quality data centre projects on time, with a focus on data centre containment building expertise. We offer a comprehensive range of services, including architectural, air-conditioning, mechanical, electrical (including extra low voltage systems), and fire protection systems, with full integrated system testing to ensure seamless operation and minimize downtime.

Our experienced professionals have a proven track record of delivering complex data centre projects, providing clients with scalable and flexible solutions that meet their evolving needs. We prioritize innovation and quality, delivering the most efficient and reliable data centre solutions to maximize uptime and performance for our clients.

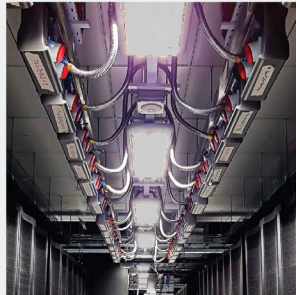


Heat Load Integrated System Testing

Hot Aisle Containment with raised flooring, dual sliding doors, and vinyl Rack Hat between the ceiling and cabinets.



Overhead Track Busway Installation with plugin units for the critical load.



Data Centre Construction Air Balancing Testing



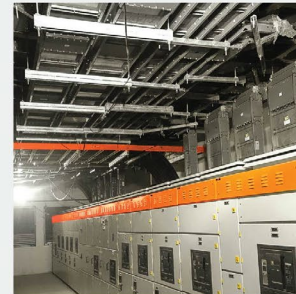
MMT TimMac@Kranji



Mounting busduct on supporting brackets at ramp up drive way.



Securely mounting busducts to unistrut supports and aligning ends of adjoining sections.



Busduct connection to switchboard

The installation of multiple range busducts, including from the high level link bridge switchroom to another block, was a complex and challenging project that required a high level of expertise and coordination.

As a result, the electrical infrastructure at this project has greatly improved, with the new busducts operating efficiently and providing reliable power to the facility.

This project is a testament to the project team's ability to deliver high-quality busway and busduct installation services that meet the highest industry standards.

OUR MAJOR CLIENTS

Counting established organisations such as ABB, Siemens, Schneider Electric Singapore and Exyte Singapore as some of their clients, Busways strives to be in the forefront of the latest technologies and skilled expertise in this industry - always. This is done through placing great emphasis on continuous training and upgrading of skills of every employee throughout the organisation.



OUR CERTIFICATIONS

In order to maintain the highest level of competency, Busways has achieved the following accreditations:

- ISO 9001, 14001 & 45001
- SAC QS-1999-05 & OSH-2008-01
- BizSAFE STAR
- SME Top 100 Companies
- Asia Prestige Innovation & Quality
- BCA Registered Contractor – ME05 Electrical Engineering – Grade L6
ME06 – Fire Prevention & Protection System - Grade L1
General Builder Class 2 – GB2

Busways will continue to achieve higher tiers of credentials in the near future to uphold our competency in this field.

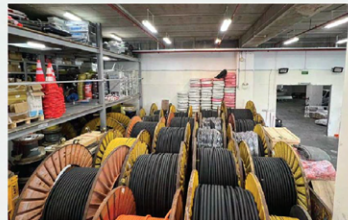


OUR OFFICE & SUPPORT

With practicality and presentation being the key focus in our product design, our work spaces follow the same principle to achieve maximum efficiency. As workplace safety is our top priority, we maintained our work areas organised, conducive & safe with no clutter, obstruction & hazards for our employees to work.



AREA 1



AREA 2



Beyond our physical work space

The culture we embrace embodies a fun, nurturing and challenging concept where employees are encouraged to go above and beyond to realise their fullest potential.

We listen to the voices of our employees, allowing clear and direct channels for feedback, discussions and suggestions. In Busways, we greatly believe that we are only as strong as our every individual.

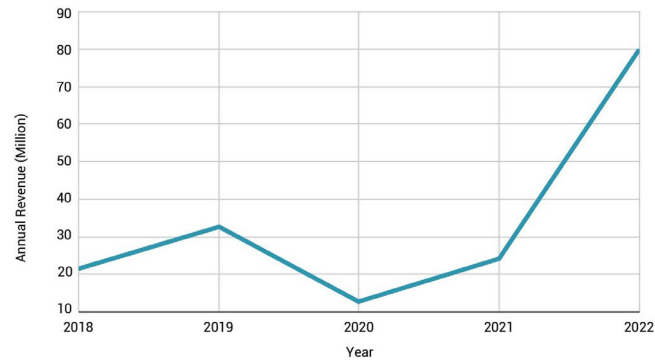
With the management strong support for continuous trainings and advocating each to perform the best of their ability, Busways is poised to take on any challenges in the near future!

OUR PERFORMANCE VALUE

At Busways, we are always forthcoming on our past performances. We believe such transparency can help us to build and achieve trust among our stakeholders. By reinforcing this commitment always, we hold ourselves accountable to a high standard of achieving the desired outcomes and delivering exceptional results for our clients.

One of the most important performance indicators would be our year-on-year revenue. By reporting our annual revenue, we give both our internal and external stakeholders the confidence and trust needed from our management.

Annual Revenue



Over the past three years, our company has experienced remarkable revenue growth, overcoming challenges posed by the pandemic crisis. Our revenue has grown by an average of \$35 million per year, a testament to our team's unwavering dedication and hard work.

In 2022, we achieved exceptional revenue growth, reaching \$80 million, a significant increase from the previous year. Our focus on delivering exceptional results has enabled us to establish ourselves as a trusted partner in the industry. Looking ahead, we will continue to invest in our team, technology, and processes to maintain our commitment to excellence and continue our growth trajectory.





ADDRESS

20 & 22 Woodlands Industrial Park E1
Singapore 757739 & 757740

CONTACT

Tel:	+65 6481 8819
	+65 6365 1319
Fax:	+65 6481 8817
Email:	sales@busways.com.sg
Web:	www.busways.com.sg