

BUSWAYS

We Deliver What We Promise

**COMPANY
PROFILE**



CONTENT

01 **OUR HISTORY**

03 **WHY BUSWAYS**

05 **OUR SERVICES**

07 **SUCCESSFUL PROJECTS**

15 **OUR MAJOR CLIENTS**

16 **OUR CERTIFICATIONS**

17 **OUR OFFICE & SUPPORT**

19 **OUR PERFORMANCE VALUE (2021 - 2025)**



OUR HISTORY

In 2006, Busways started as a contractor with a small team of five engineers, to supply and install Electrical LV & MV Busducts. We made the best out of every opportunity given to us with full dedication over the years. Through the increased share of projects and solutions, we acquired deeper technical and practical expertise.

Today, we are one of the leading M&E companies that primarily deals with electrical power distribution. To build on this success, Busways continues to upscale ourselves by getting higher level grading certified by BCA so as to better position ourselves in the market and we will continue to strive to make a difference in every project that we undertake. This will be our commitment in our brand essence to strive to deliver our highest standard under strict quality management guidelines as our promise.



2008

Member of The Singapore Contractor Association



2014

The Proud Recipient 2014. Asian Prestige Innovation & Quality Service Awards



2016

Busways Engineering Services Pte Ltd was changed to Busways Pte Ltd

Achieved ISO 9001, ISO 14001, OHSAS 18001 & SS506: Part 1 for the scope of activities:
Provision of HV/LV Electrical Engineering Services for:

- Supply, Install, Testing & Commissioning & Maintenance of Busducts System, Cabling & Cable Support System and Metal Fabrication Works

Attained BizSafe Star by The Workplace Safety and Health Council



2017

Attained Grade L4 for BCA Registered Contractor – ME05 Electrical Engineering



2018

Attained Grade L5 for BCA Registered Contractor – ME05 Electrical Engineering

Upgraded OHSAS 18001 & SS506: Part 1 to ISO 45001: 2018

Member of Singapore Electrical Contractors & Licensed Electrical Workers Association



2019

Member of Singapore Electrical Trades Association



2022

Attained Grade L6 for BCA Registered Contractor – ME05 Electrical Engineering

ME06 - Fire Prevention & Protection System Grade L1

GB2 - General Builder Class 2



2023

Attained Grade L3 for ME01 Air-Conditioning, Refrigeration & Ventilation Works



2024

ME06 - Fire Prevention & Protection System Grade L3

Enterprise 50 Award 2024



2025

Certified at Grade L6 for ME15 – Integrated Building Services

Achieved Grade L4 in ME01 – Air-Conditioning, Refrigeration & Ventilation Works



2026

Attained Grade Class 1 for GB1 – General Builder

WHY BUSWAYS

Busways is committed to uphold excellent work quality control for all our customers.

We do so by:

- Communicating, understanding and exceeding customers' expectations
- Providing only the best materials, service and skilled manpower
- Meeting deadlines and ensuring a smooth completion of projects
- Monitoring performance and improving key processes through an internal audit

To monitor our progress, we have the following processes in place for evaluation:



Material delivery identification & verification

Materials are documented and assessed by our experienced site managers to enforce compliance with projects' requirements.



Work-in-progress installation in-house inspection & verification test

Work-in-progress installation inspection & testing are done to prevent any snowballing of errors towards the final completion of the project. Any error found will be rectified immediately to avoid any need of overhauling.



Work-in-progress inspection: RTO & RE inspection



Testing and commissioning: Site Acceptance Test, individual & combined system functional test

Testing and commissioning are of paramount importance, during and after installation to ensure safety & contract compliance. This is to ensure that the system is fully functional and without compromise.



VISION

To be the most trusted partner that is adept and qualified for all M&E solutions for generations to come.

BRAND MISSION

We constantly improve our level of proficiency to give our clients the level of quality and professionalism that they have become used to.

VALUES

Safety

We do not take safety for granted. We ensure that all standard operating procedures are carried out properly without compromising the safety of our employees.

Punctuality

We always deliver timely results. The notion of punctuality is what separates us from the rest.

Adherence

We comply to all rules and regulations and do not compromise our ethics to achieve fast results.

Meticulous

We scrutinise all aspects of the project thoroughly right from the design to the implementation stage to keep errors to the minimum.

Knowledge

We think beyond convention to increase value in our works. To make a difference, we share our knowledge to grow and learn more.



Powering Infrastructure Integrated Solutions



Providing end to end supply and installation of LV and MV busduct systems with full compliance through qualified engineering.

Delivering customized design and fabrication of electrical metal works and aluminum canopies tailored to meet exact project specifications.



Providing customized design and fabrication alongside installation of overhead linkways to create seamless utility to building interconnection.

Delivering robust structural solutions engineered with high precision M&E integration across critical industrial and commercial facilities.



Providing integrated builder works and M&E systems including electrical, ACMV, and fire protection specifically engineered for the stringent demands of mission critical facilities.

With a proven track record in data centre construction and retrofits, we deliver high precision, compliant solutions for large scale industrial and commercial environments.

Energizing Transport Delivering Electric Vehicle Infrastructure



Successfully installed the 22kW AC charger at Busways Headquarters



Successful Solar Photovoltaic (PV) Installation at B'EV Terminal Charging Hub



Testing and Commissioning of 120kW DC Charger

B'EV, a subsidiary of Busways Pte Ltd, delivers comprehensive turnkey EV charging solutions from compact chargers to large-scale infrastructure integrated with a robust mobile application for real-time monitoring, usage management, and secure payment.

Our expertise is proven by the successful supply and installation of 240 Nos EV Chargers for LTA Bus Depots, energized and handed over ahead of schedule in 2025. Other key projects include Sanofi Singapore, Micron, CREATE @ NUS, UPS, and PSA.



LTA EV Bus Depots (Sengkang West & East Coast)



Commanding Voltage Delivering High Voltage Excellence

H.T Switchgear Specialist, a subsidiary of Busways Pte Ltd, delivers comprehensive high-tension power solutions through turnkey supply, installation, testing, and commissioning of HV switchgears, transformers, and LV adaptations.

We provide expert design, fabrication, and installation of essential electrical support systems, including floor frames, marshalling panels, and battery chargers. Our track record includes successfully energized projects at Punggol Regional Sports Centre, Dieppe Barrack, Biopolis, and Keppel Tower Redevelopment.



HT Switchgear GIS ZX0 (2A Mandai): Full supply, installation, and commissioning. System energized and handed over ahead of schedule.



Testing & Commissioning: Rigorous FAT and SAT conducted to ensure all equipment met safety standards and was ready for site deployment.



2.5 MVA FR3 Oil-Type Transformer (51 Benoi Road): Full supply, installation, and commissioning. System energized and handed over ahead of schedule.

Defining Living Constructing Integrated Spaces



A newly erected 3-storey semi-detached dwelling, envelope-controlled, complete with an attic and a private swimming pool, located at Sallim Road.



Reconstructed an existing 2-storey corner terrace into a 3-storey envelope-controlled dwelling with attic, located along How Sun Road.



Office Interior Fit-out: Turnkey space planning and full-scale construction for corporate environments.

Build and Construct, a subsidiary of Busways Pte Ltd, provides comprehensive end-to-end design, build, and reconstruction for residential and commercial developments.

From landed homes to commercial projects, we deliver high-quality, sustainable construction integrated with expert M&E and A&A works. Backed by decades of engineering experience, we prioritise safety, compliance, and cost-efficiency—bringing every vision from concept to completion.

5

major projects
per year

S\$350M

total
5-year revenue
(2021-2025)

SUCCESSFUL PROJECTS

With at least 5 major and multiple other smaller projects every year, Busways has managed to amass a number of projects under her portfolio since her establishment. Accompanied with a spectrum of industry knowledge and experience from various sectors, Busways certainly has the expertise to handle projects of any scale.

To add, Busways has achieved approximately S\$350 million in revenue for the past 5 years. And with such a consistent track record, you can depend on us to deliver.

Industries that we focus:

- Build & Construction
- Data Centre
- Heavy Industry
- Commercial Building
- E-mobility
- Maintenance & Others



Data Centre

- Data Centre at Lok Yang
- Data Centre at Yung Ho
- Data Centre at Kim Chuan
- Data Centre at Hougang
- Data Centre at Sunview
- Data Centre at Tampines
- Data Centre at Alexandra
- Data Centre at Ang Mo Kio
- Data Centre at Defu Lane

Data Centre

Here's the list of services done for this project.



BMS / EBMS Installation



Electrical Power Distribution Network & Cabling Works - Work Done in Electrical Riser



Electrical Power Distribution Network & Cabling Works - Indoor busducts & termination work to transformer, cable containment & cabling works



Electrical Power Distribution Network & Cabling Works - Cast resin busducts & termination work inside generator enclosure



Customised metal fabrication works - hot aisle installation using hollow sections & unsaturate



Customised metal fabrication works - cold aisle installation using hollow sections & unsaturate



Customised metal fabrication works - customised cable support system in hot aisle for future M&E services installation



Distribution Busducts Installation in Data Hall

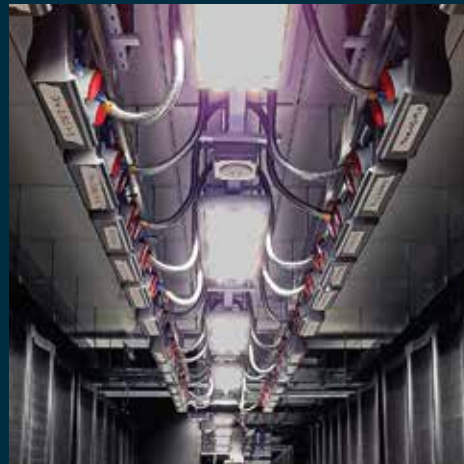
Data Centre Solutions

Busways specializes in high-quality data centre containment and construction, delivering integrated architectural, ACMV, electrical, ELV, and fire systems with full commission testing to ensure seamless operation and reliability.

Our experienced professionals provide scalable, mission-critical solutions, leveraging a proven track record in complex projects to maximize uptime, efficiency, and performance for evolving data centre infrastructure.



Hot Aisle Containment with raised flooring, dual sliding doors, and vinyl Rack Hat between the ceiling and cabinets.



Overhead Track Busways Installation with plugin units for the critical load.



Heat Load Integrated Systems Test



Data Centre Construction Air Balancing Testing

End-To-End Data Centre Fit-Out Construction



4 Mega Watt Heat Load Test (4MW HLT) during Integrated System Test (IST)

Busways provides turnkey solutions for data centre construction and fit-out, covering Concept & Feasibility, Design & Planning, Procurement & Construction, Testing & Commissioning, and Handover & Operation.

Our expertise delivers practical, scalable M&E infrastructure, including raised floors, cold/ hot aisle containment, security, and BMS/EMS systems.



Hot Aisle Containment setup



High Voltage (HV) Switchroom



Low Voltage (LV) Switchroom



Computer Room Air Conditioning (CRAC) Room

Commercial/Semiconductor



230kV Substation (SENOKO)

2019 is a new chapter for Busways Pte Ltd. For the 1st time in our history, we were awarded an important & prestigious contract to assemble 230kV 150MVA Transformers on site at Micron 230kV Substation. In addition to the contract, we were also the specialist contractor to fit-out the whole substation with various cable containment infrastructures, installation & termination of 230kV HV cable & LV control cables to respective 230kV & 22kV HV switchgears & transformers.



230kV 150MVA
Transformer Installation



230kV Cable Installation



230kV GIS Equipment Testing



6.6kV Busducts Installation

Semiconductor Manufacturing Project

Over the period of our establishment, we were involved in several projects related to semiconductor manufacturing plants. One of them is the Micron at Senoko. We were awarded a major contract for the supply & installation of MV/LV busducts to serve various equipment control panels & load centre. In addition, we were also involved in the LV power provision & hook-up of wafer-chip fabrication machines. Moreover, another part of the contract was the supply & install of ELV cabling works to hook-up event monitoring system.



Supply & Install LV Provision of industry socket (Ceeform) for hook-up of wafer-chips Fabrication



Supply & Install of MV/LV Busducts for control panels & Load Centre

New Mandai Bird Park

Another milestone for our company is the award of electrical infrastructure for underground pipes & manholes in the new Mandai Bird Park. These underground pipes & manholes infrastructures are the “veins” to allow electrical cables & power to serve various attractions in the park.

Underground Manhole:
Cast-in Situ Work in Progress



Underground Electrical & telecom
Lead-in Pipe works: Concrete
haunching of pipes in progress



Semiconductor - Siltronic FAB Project

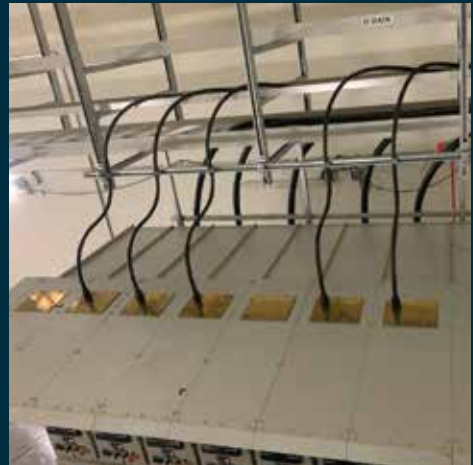
Here's the list of services done for this project.

This High Voltage Cabling Works project is a testament to our team's technical and management expertise, and our unwavering commitment to delivering exceptional results to our clients. We were able to successfully install the High Voltage 12.7/22kV cable on the cable ladder system and complete termination work for 22kV at switchgear, while maintaining the highest level of quality and safety.

This project, along with our extensive portfolio of successful projects, demonstrates our ability to deliver innovative and reliable solutions, and our commitment to exceeding our client's expectations.



Successful installation of the HV 12.7/22kV cable on the cable ladder system



The installation of the pilot cable on the switchgear



Completion of termination work for 22kV at the switchgear was a critical milestone in the project



HV cable at the substation cable chamber room, ensuring the proper functioning of the high voltage cabling system



Our team successfully installed cable ladders as supports for high-volume or heavy cabling



Completed installation cabling work to the switchgear panel

Busduct Installation Project



We were awarded the contract for the supply and installation of Low Voltage (LV) Busducts to support equipment across the project site. This milestone showcases our team's technical expertise, detailed planning, and commitment to delivering tailored, high-quality solutions.

Throughout the project, our team demonstrated strong proficiency in managing complex installations, ensuring seamless integration with existing infrastructure.

Every stage from design, supply, installation to termination was carried out with precision, meeting the highest standards of quality and safety.



Supply and installation of busduct termination within the transformer



Supply and installation of LV busduct between the transformer and the main switchboard



The busduct riser facilitates vertical power distribution across the building's floors



Successful integration with the LV electrical system

MMT TimMac@Kranji



Mounting busduct on supporting brackets at ramp up drive way.



Securely mounting busducts to unistrut supports and aligning ends of adjoining sections.



Busduct connection to switchboard

The installation of multiple range busducts, including from the high level link bridge switchroom to another block, was a complex and challenging project that required a high level of expertise and coordination.

As a result, the electrical infrastructure at this project has greatly improved, with the new busducts operating efficiently and providing reliable power to the facility.

This project is a testament to the project team's ability to deliver high-quality busway and busduct installation services that meet the highest industry standards.

OUR MAJOR CLIENTS

Counting established organisations such as ABB, Siemens, Schneider Electric Singapore and Exyte Singapore as some of their clients, Busways strives to be in the forefront of the latest technologies and skilled expertise in this industry - always. This is done through placing great emphasis on continuous training and upgrading of skills of every employee throughout the organisation.



OUR CERTIFICATIONS

In order to maintain the highest level of competency, Busways has achieved the following accreditations:

- ISO 9001, 14001 & 45001
- BizSAFE STAR and BizSAFE Partner
- ME05 Electrical Engineering - Grade L6
- ME06 Fire Prevention & Protection System - Grade L3
- ME01 - Air-Conditioning, Refrigeration & Ventilation Works - Grade L4
- Singpre SME 500 Award 2023
- Golden Bull Award 2023 - Super Golden Bull
- Enterprise 50 Award 2024
- ME15 - Integrated Building Services - Grade L6
- GB1 - General Builder Class 1

Busways will continue to achieve higher tiers of credentials in the near future to uphold





Workforce Support

OUR OFFICE & SUPPORT

With practicality and presentation being the key focus in our product design, our work spaces follow the same principle to achieve maximum efficiency. As workplace safety is our top priority, we maintained our work areas organised, conducive & safe with no clutter, obstruction & hazards for our employees to work.



Warehouse Area



Headquarters Front Desk



Beyond our physical work space

The culture we embrace embodies a fun, nurturing and challenging concept where employees are encouraged to go above and beyond to realise their fullest potential.

We listen to the voices of our employees, allowing clear and direct channels for feedback, discussions and suggestions. In Busways, we greatly believe that we are only as strong as our every individual.

With the management strong support for continuous trainings and advocating each to perform the best of their ability, Busways is poised to take on any challenges in the near future!

EXPANDING OUR CAPABILITIES

In 2024, we strengthened our operations with the acquisition of Busways Group and a new facility at 27 Senoko Way. This site enhances our logistics, warehousing, and office space, with the EV Charger Solution, HT Switchgear Specialist, and Logistics Department relocating here for improved coordination and efficiency.





More than an operational hub

Busways Group brings its "Toward Zero Energy Warehouse" vision to life through these state of the art facilities. The site integrates a Battery Energy Storage System (BESS), solar PV systems, and wind turbines to sustainably power the B'EV Terminal Charging Hub, supporting EV charging for heavy vehicles and commercial fleets.

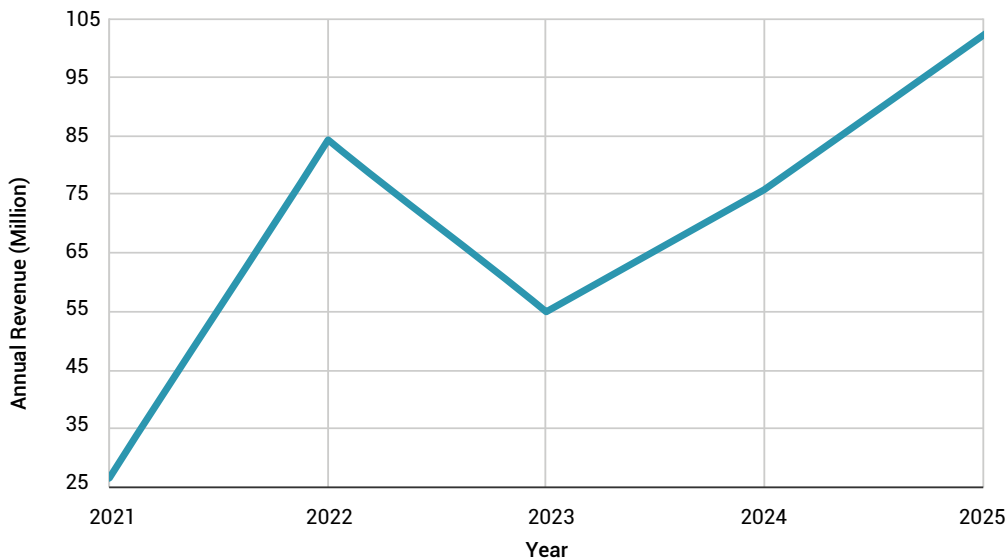
Complementing this, an Automated Storage System enhances inventory efficiency and operational productivity. Spanning 8,500 sqm across four levels, the facility reflects our strong commitment to innovation, sustainability, and operational excellence, advancing a future ready and greener workplace.

OUR PERFORMANCE VALUE

At Busways, we are always forthcoming on our past performances. We believe such transparency can help us to build and achieve trust among our stakeholders. By reinforcing this commitment always, we hold ourselves accountable to a high standard of achieving the desired outcomes and delivering exceptional results for our clients.

One of the most important performance indicators would be our year-on-year revenue. By reporting our annual revenue, we give both our internal and external stakeholders the confidence and trust needed from our management.

Annual Revenue



In FY2025, Busways achieved approximately **S\$103 million in revenue**, driven by strong project execution, strategic client partnerships, and a resilient market presence. With a **5-year revenue CAGR of 40%**, our performance reflects consistent growth and alignment with Singapore's economic trajectory. These results underscore our commitment to innovation, operational strength, and sustainable growth, positioning Busways to seize emerging opportunities and continue delivering excellence.



ADDRESS

SINGAPORE

BUSWAYS PTE LTD

Headquarters Office:

20 & 22 Woodlands Industrial Park E1,
S757739 & S757740

BUSWAYS GROUP

Integrated Hub and Office:

27 Senoko Way, S758060

MALAYSIA

BUSWAYS (M) SDN. BHD.

BDCS ENGINEERING SDN. BHD.

No. 68 Jalan SME 3, Kawasan
Perindustrian SME, Bandar Indahpura,
8100 Kulai, Johor, Malaysia

PXB ENGINEERING SDN. BHD.

6A, Level 6, Menara PKNS,
No.17, Jalan Yong Shook Lin,
Seksyen 7, 46050 Petaling Jaya,
Selangor, Malaysia

CONTACT

Tel: +65 6481 8819
+65 6365 1319
Fax: +65 6481 8817
Email: sales@busways.com.sg
Web: www.busways.com.sg